

St. John Fisher College

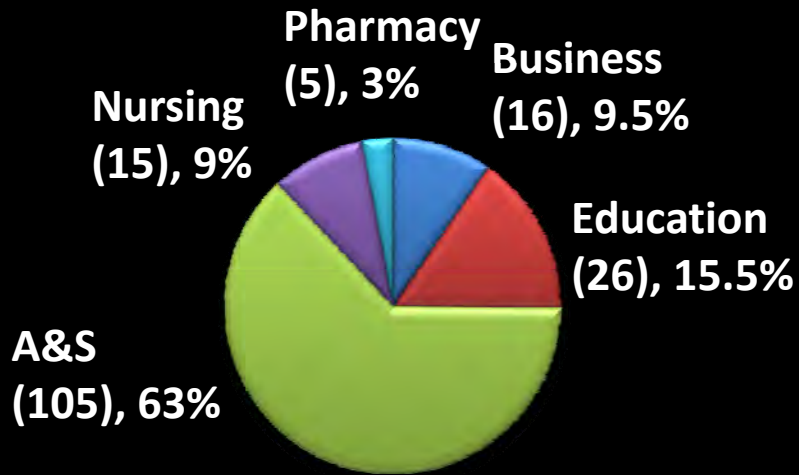
Draft Academic Master Plan



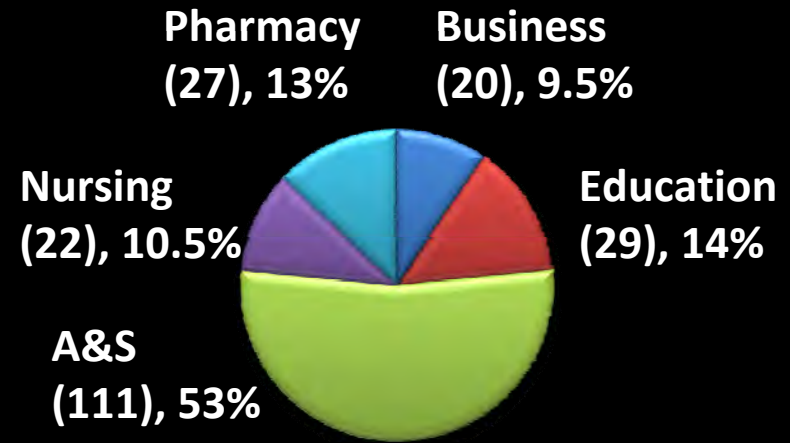
2006-07

2010-11

Full-Time Faculty by School

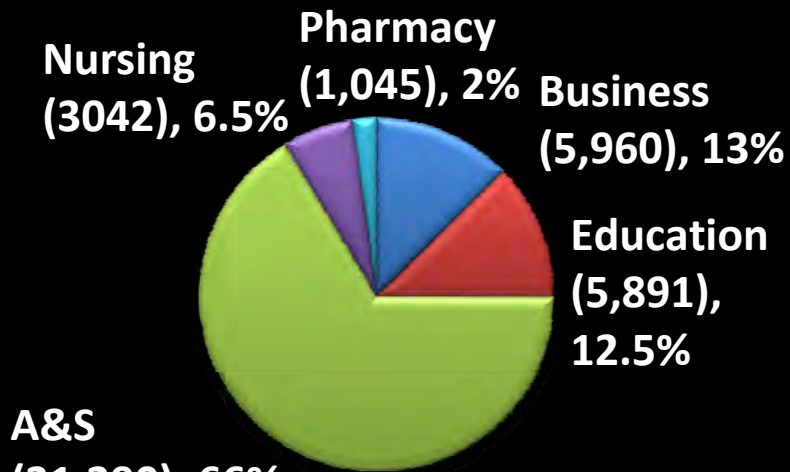


167 FT Faculty

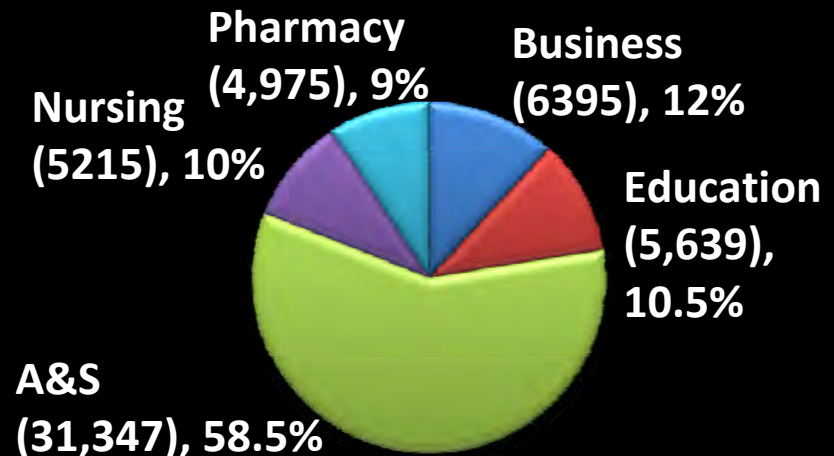


209 FT Faculty

Student Credit Hours Generated by School



47,228 Total



53,571 Total

The Carnegie Classification of Institutions of Higher Education

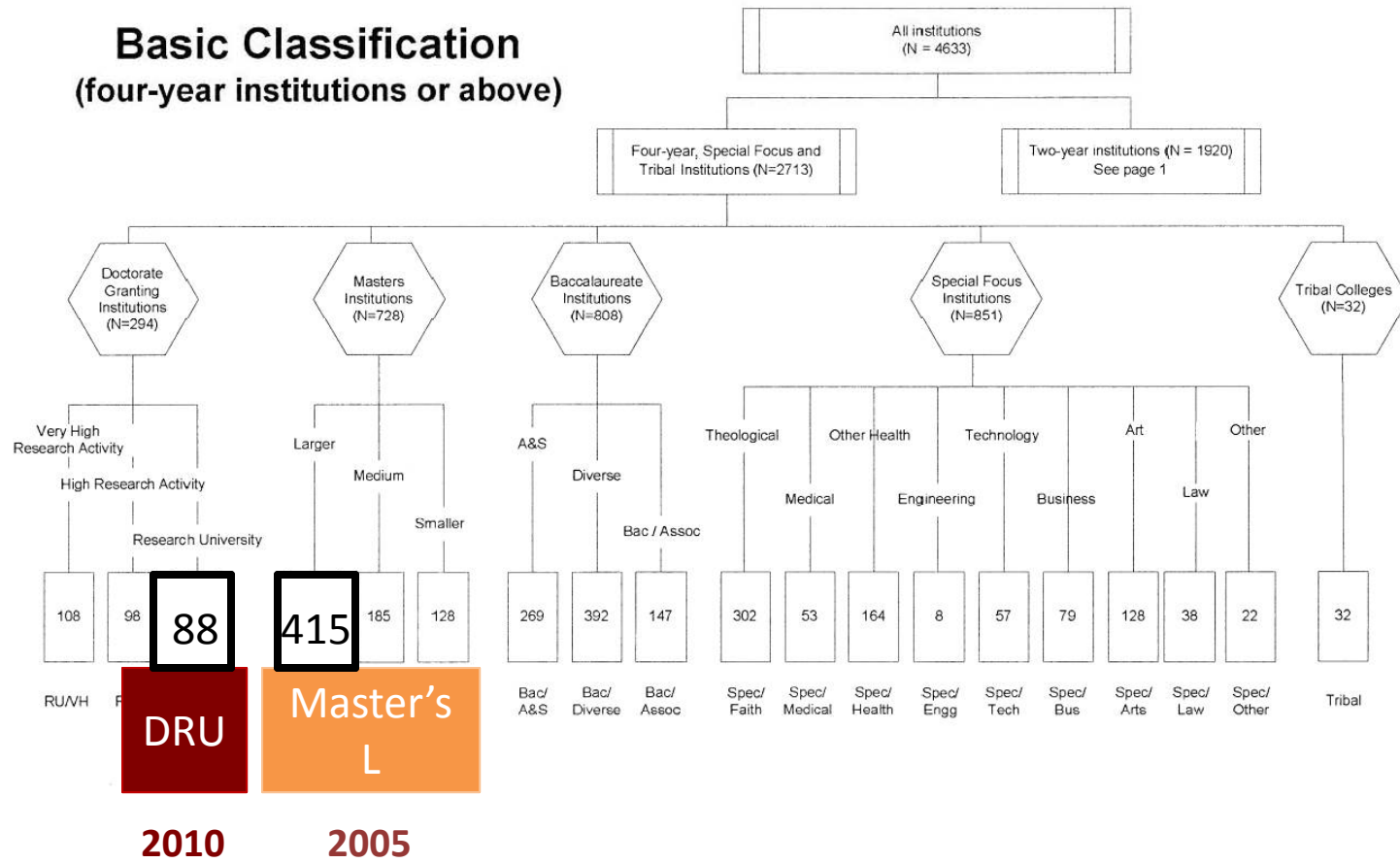
Classification	Category
Basic	DRU: Doctoral/Research Universities
Undergraduate Instructional Program:	Prof+A&S/SGC: Professions plus arts & sciences, some graduate coexistence
Graduate Instructional Program:	S-Doc/Other: Single doctoral (other field)
Enrollment Profile:	HU: High undergraduate
Undergraduate Profile:	FT4/S/HTI: Full-time four-year, selective, higher transfer-in
Size and Setting:	M4/R: Medium four-year, primarily residential

Basic Classification

- **Doctorate-Granting Universities**

- Institutions were included in these categories if they awarded at least 20 research doctorates in 2008-09
- Professional doctoral degrees, i.e. J.D., M.D., Pharm.D., Aud.D., DNP, etc., were not counted for the purpose of this criterion
- Doctorate-granting institutions were assigned to one of three categories based on a measure of research activity

Basic Classification (four-year institutions or above)



Strengths

- Accreditation
- Faculty Expertise
- Community Engagement
- Span of Academic Programs
- Additional Locations
- Reciprocal Alumni Relations
- Program Development
- Instructional Facilities
- Experiential Learning
- Successful Graduates

Weaknesses

- Linking Assessment-Based Planning & Budgeting
- Perceived Value Disconnect between Faculty Responsibilities & Rewards
- Equitable Marketing/Branding
- External Funding
- Insufficient Lab Space & Classrooms
- Insufficient Student Support Services
- Assessment-Based Planning
- Lack of Diversity

Opportunities

- Additional Locations
- External Funding
- Program Development
- Experiential Learning
- Alumni Relations
- Alternative Delivery
- Community Partnerships

Challenges

- Demographic Shifts
- For-Profits
- High Cost of College
- Economic Downturn
- Competing Schools
- Job Market
- Increased Interest in Vocational Skills
- Decreased Interest in Humanities

STRENGTHS

WEAKNESSES

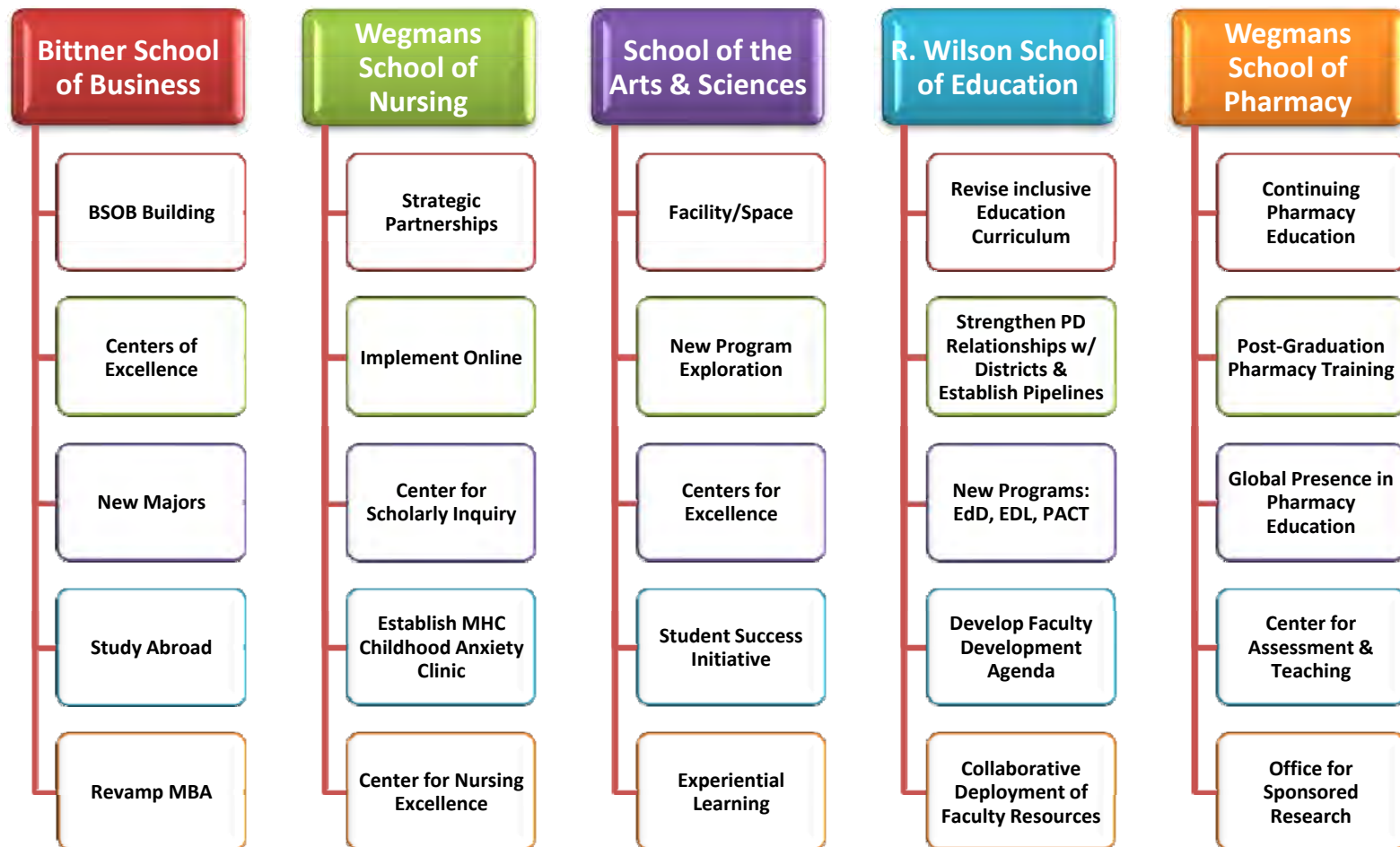
EMERGING THEMES/PRIORITIES

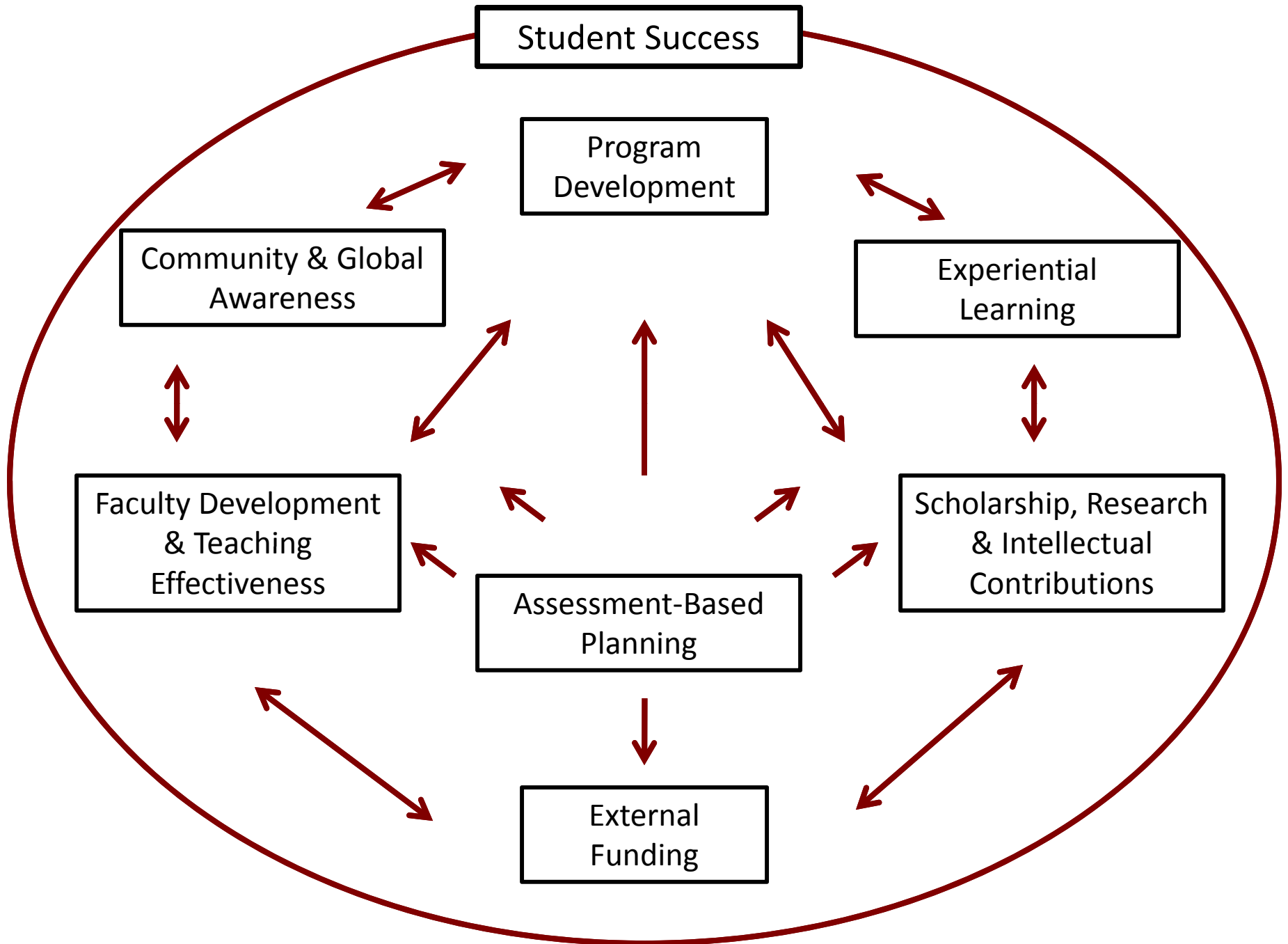
Program Development &
Alternative Sites/Delivery
Assessment-Based Planning
Experiential Learning
Teaching Effectiveness & Faculty Development
External Funding
Scholarship, Research & Intellectual
Contributions
Community & Global Awareness
Student Success

OPPORTUNITIES

CHALLENGES

25 School-Based Strategic Initiatives







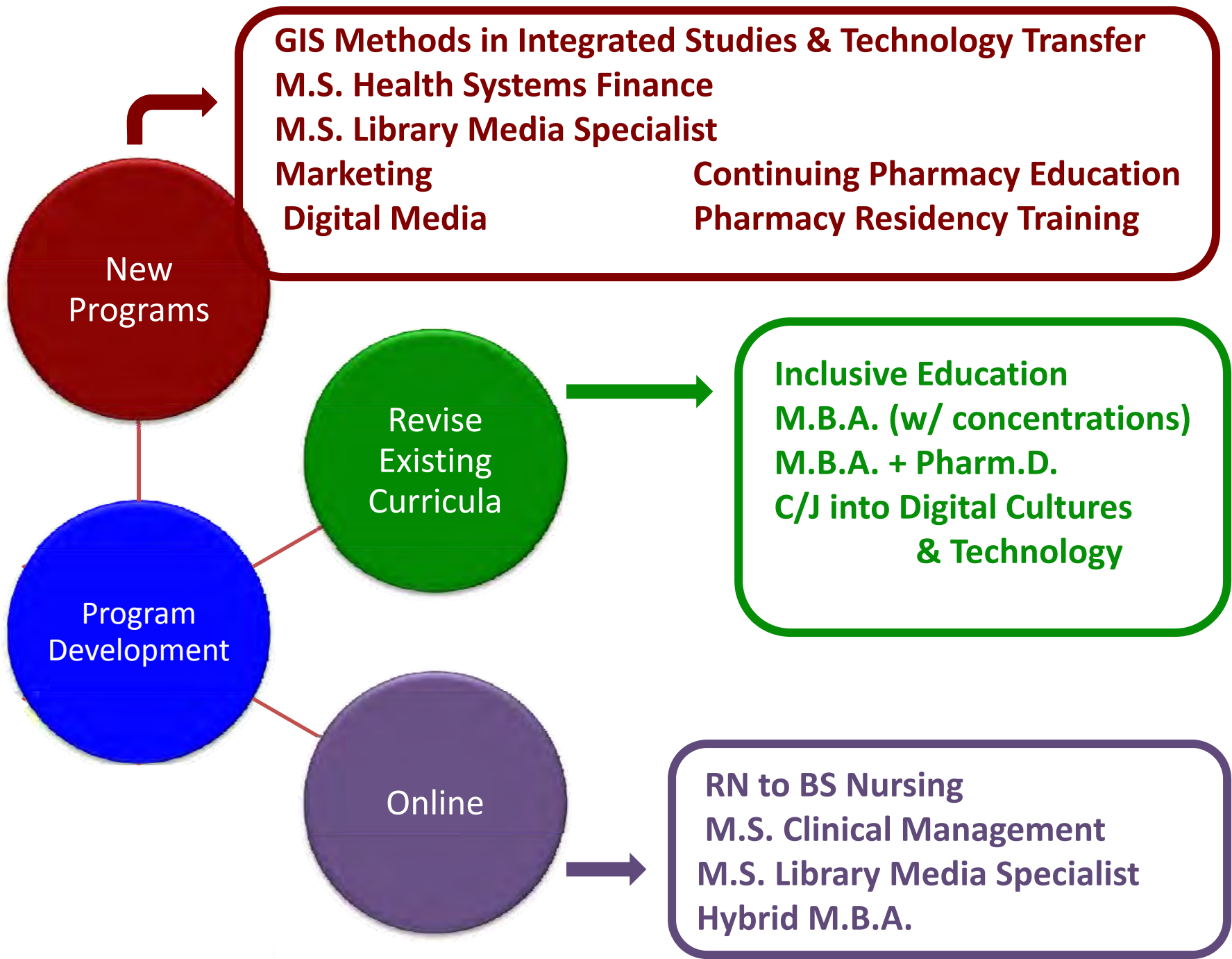
**Mission
Consistent**

**Program
Development**

**Financially
Viable**

**Market-
Responsive**





GIS Methods in Integrated Studies & Technology Transfer

M.S. Health Systems Finance

M.S. Library Media Specialist

Marketing

Digital Media

Continuing Pharmacy Education

Pharmacy Residency Training

New Programs

Revise Existing Curricula

Inclusive Education

M.B.A. (w/ concentrations)

M.B.A. + Pharm.D.

C/J into Digital Cultures & Technology

Program Development

Online

RN to BS Nursing

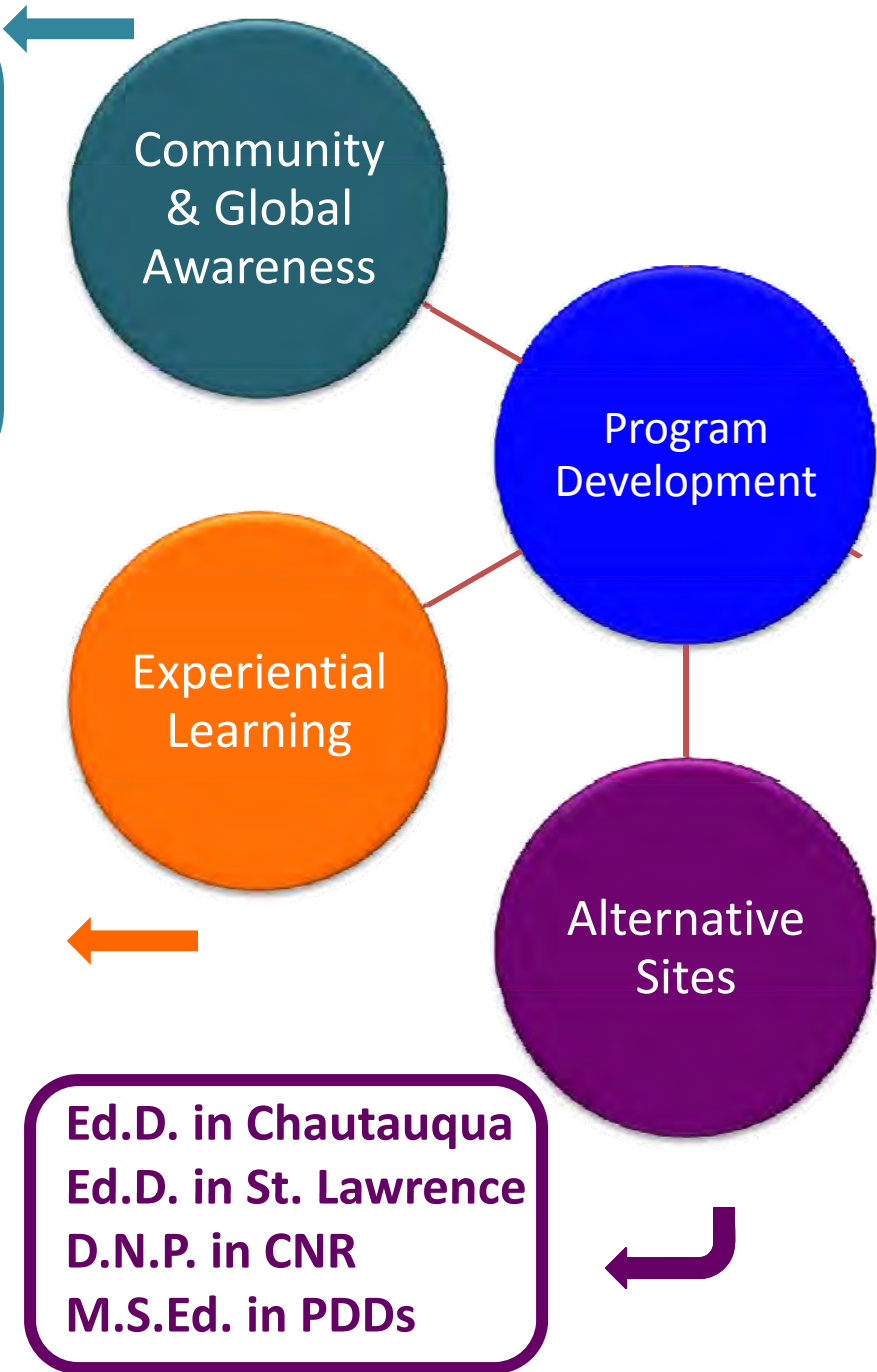
M.S. Clinical Management

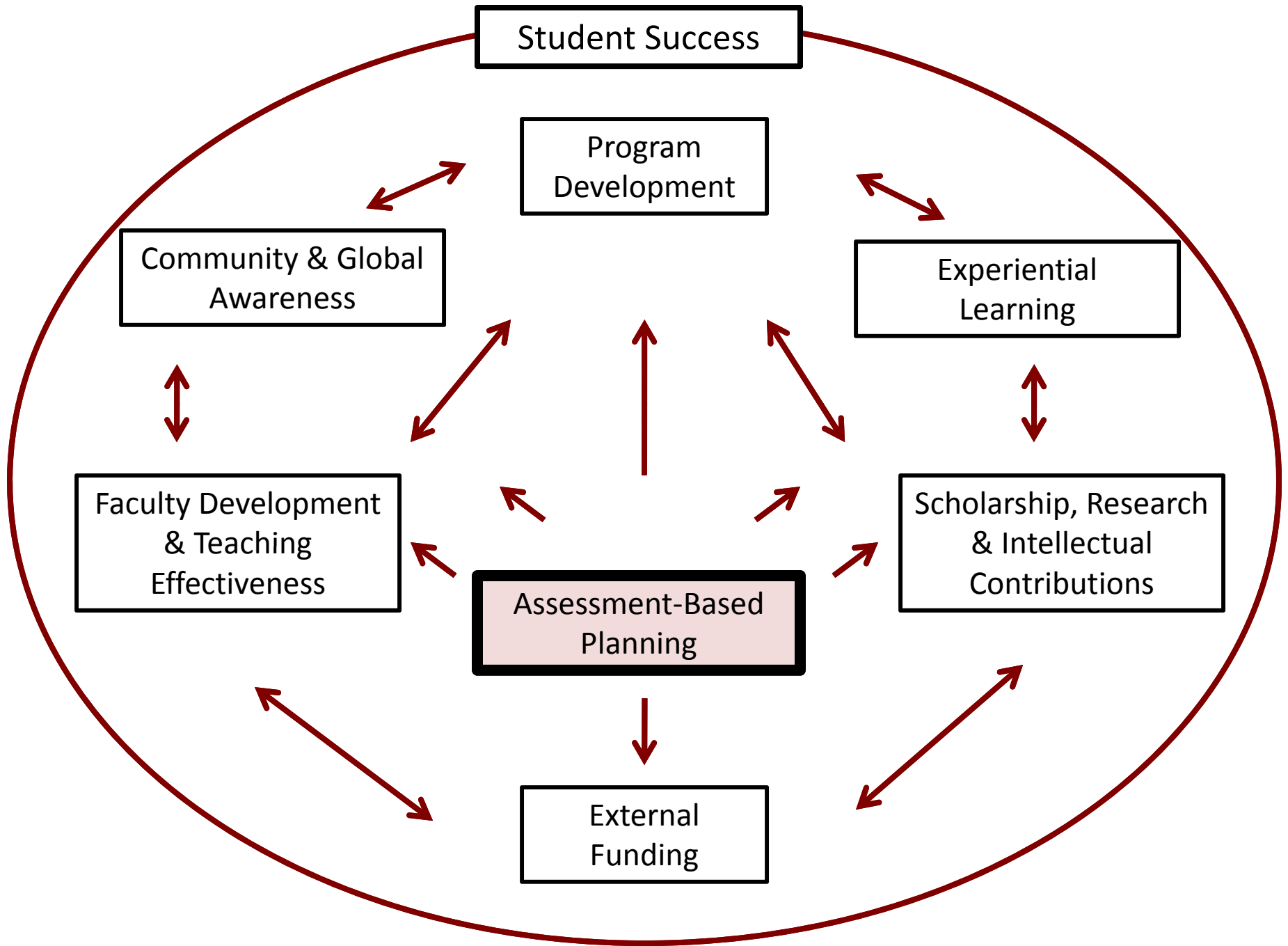
M.S. Library Media Specialist

Hybrid M.B.A.

**M.S. Advanced Practice Nursing
w/ EU Partners (Ireland, Spain)
UG International Exchange
(Spain, Italy)
Clinical Field Experience (India,
Kenya, Ireland, Saudi Arabia)
Foreign & Domestic Study Center**

**Summer Science Research
Center for Community
Engagement: NFP Leadership
FEMA Training WSOP
MHC: Childhood Anxiety Clinic
Center for Applied Research
Institute for Catholic Studies
Nurse Managed Clinic
Service Learning
Center for Experiential Learning**



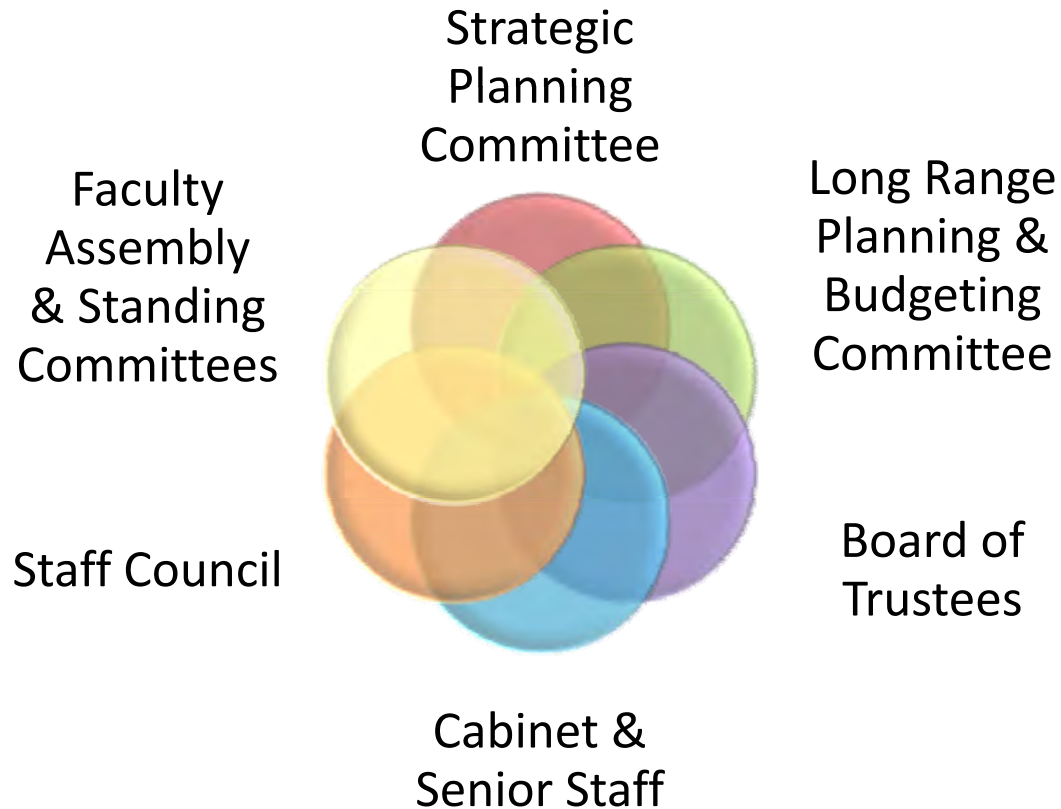


Institutional Effectiveness

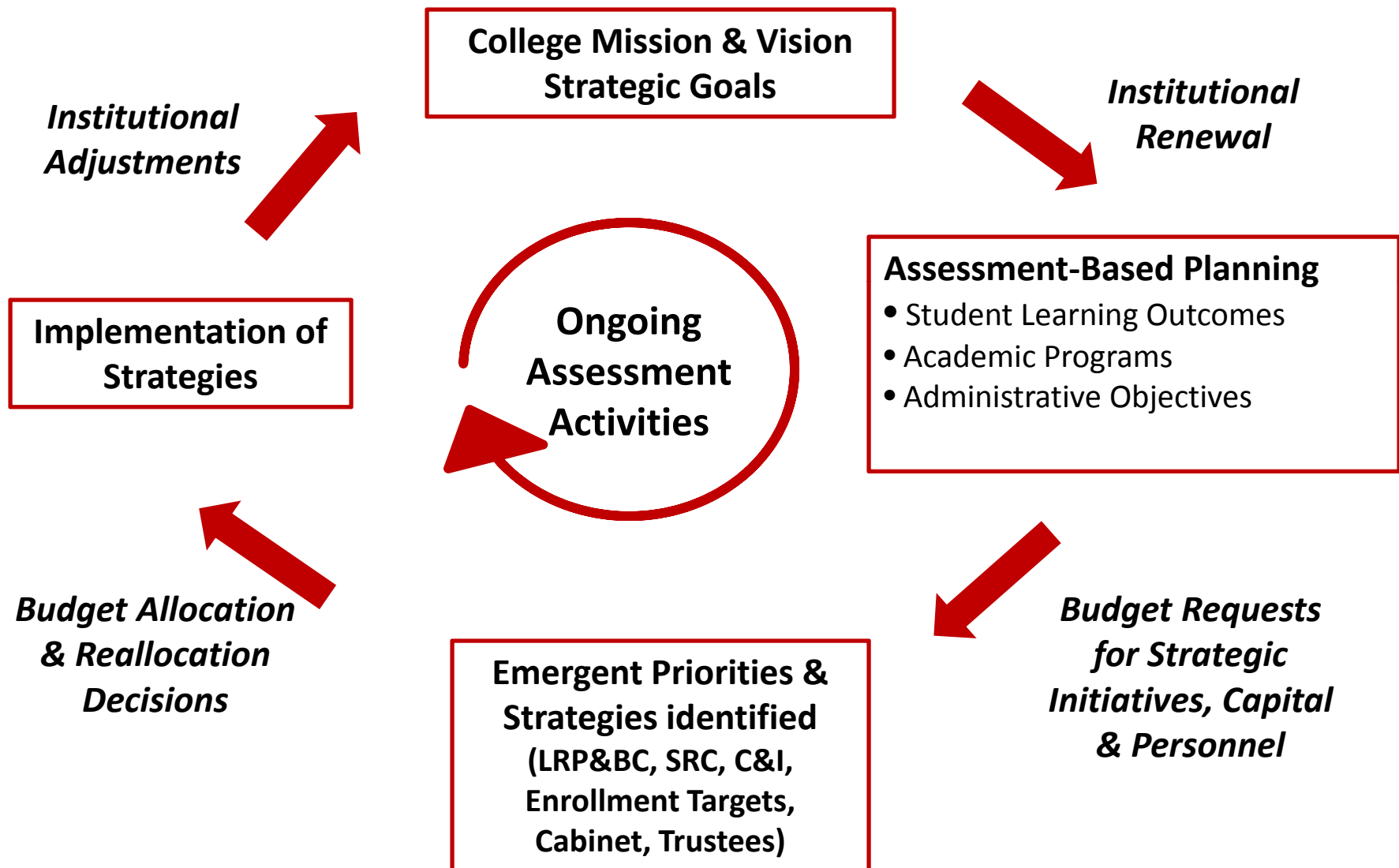
- Middle States Commission on Higher Education
- **Standard 7: Institutional Assessment**
 - The institution has developed and implemented an assessment process that evaluates its overall effectiveness in achieving its mission and goals and its compliance with accreditation standards.
- **Standard 14: Assessment of Student Learning**
 - Assessment of student learning demonstrates that, at graduation, or other appropriate points, the institution's students have knowledge, skills, and competencies consistent with institutional and appropriate higher education goals.

Institutional Effectiveness

Align Planning, Policies & Purpose



Institutional Effectiveness Model



Emerging Institutional Vision

Bittner School of Business Building
Centers for Innovation & Integrated Learning
Information Commons

